

**BRAND NEW**  
Long Reach Excavator



**SANY**  
Quality Changes the World

Operating Weight : 24150 kg    Bucket Capacity : 0.45 m<sup>3</sup>    Engine Power : 140 HP (104 kW)/ 2000 rpm



**ROBUST DESIGN  
LONG REACH  
EXCELLENT STABILITY**

**50 ft Reach  
40 ft Depth**



**SY245C-9LR**  
HYDRAULIC EXCAVATOR

# SPECIFICATIONS

# SY245C-9LR

## ENGINE

Model	Cummins 6 BT 5.9 - C140
Type	6 Cylinder, Inline, Water Cooled
Rated Engine Power	140 HP(104 kW) @ 2000 rpm
Max. Torque	571 N.m @ 1300 rpm
Batteries	2 X 12 V
Displacement	5.88 L

## CONTROL SYSTEM

Control System	DOMCS Intelligent Controller
Working Modes	H S L B
Remote Monitoring System	GPRS, GPS, GIS

## HYDRAULIC SYSTEM

Main Pumps	2 Variable Displacement Axial Piston Pumps
Max. Flow	2 X 220 lpm
Pilot Pump	1 Gear Pump
Travel Motor	2 Axial Piston Motor with Parking Brake
Swing Motor	1 Axial Piston Motor with Swing Holding Brake

## RELIEF VALVE SETTINGS

Implement Circuit	34.3 Mpa
Swing Circuit	25.5 Mpa
Travel Circuit	34.3 Mpa
Pilot Circuit	3.9 Mpa

## UNDERCARRIAGE & WORKING DEVICE

Track Shoes (Each Side)	49
Upper Rollers	2
Lower Rollers	9
Track Guard (Each Side)	2
Std. Track	800 mm / 600mm (Opt)
Std. Boom	8500 mm
Std. Arm	6020 mm
Std. Bucket	0.45 m³

## PERFORMANCE

Max. Travel Speed(High/Low)	5.4/3.3 km/h
Swing Speed	11 rpm
Grade ability	70% / 35°
Ground Pressure	42.9 kPa
Max. Tracking Force	209 kN
Bucket Digging Force	88.2 kN
Arm Digging Force	61.7 kN

## SERVICE REFILL CAPACITIES

Hydraulic Tank	240 L (Tank)	180 (Refill)
Fuel Tank	340 L	
Engine Oil	22.75 L	
Radiator	25.2 L	
Swing Device	4 L	
Travel Device	2x5.5 L	

## DIMENSION (Unit: mm)

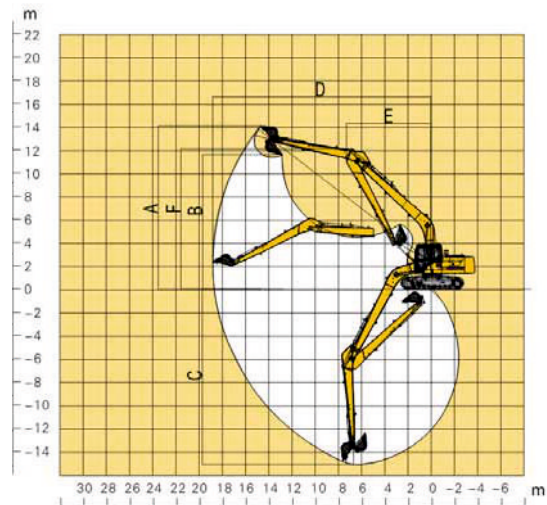


## DIMENSION (Unit: mm)

## Arm 6020

A. Overall Length	12357
B. Overall Width	3180
C. Overall Height	3265
D. Upper Width	2785
E. Overall Height of Cab	3075
F. Std. Track Shoe Width	800
G. Track Gauge	2380
H. Min. Ground Clearance	470
I. Rear-end Swing Radius	2725
J. Distance between Tumbles	3640
K. Under Carriage Length	4445

## WORKING RANGE (Unit: mm)



## WORKING RANGE

## Arm 6020

a. Max. Cutting Height	11265
b. Max. Dumping Height	9275
c. Max. Digging Depth	11970
d. Max. Digging Reach	15030
e. Min. Swing Radius	5765
f. Max. Height at Min. Swing Radius	9615

## SANY HEAVY INDUSTRY INDIA PVT. LTD.

### HEAD OFFICE

Address : Plot No. E-4, Chakan Industrial Area Phase-III,  
Village Kuruli, Taluka Khed, District Pune - 410501,  
Maharashtra, INDIA.

Tel : +91 21 35670288, Fax: +91 21 35670300

E-mail : [customercare@sany.in](mailto:customercare@sany.in)

Website : [www.sany.in](http://www.sany.in)

**Toll Free No.: 1800-209-3337**



Material & specification are subject to change without prior notice in accordance with our continuous technical innovations. Featured machines in photos may include additional equipment.